

Issue date : 5/3/00

***Rogue Eighty Eight
Vacuum Tube Power Amplifier
Owners Manual***

Vacuum Tube Amplifiers



TABLE OF CONTENTS

1) Introduction	1
2) Setting up your power amplifier	1
3) Operating your power amplifier	9
4) Maintenance	10
5) If there's a problem	11
6) Owner/Warranty Registration Form	11
7) Specifications	12
8) Warranty	13

INTRODUCTION

Congratulations on your purchase decision! We at Rogue Audio truly believe that our amplifiers provide the “smartest” value in high-end audio. If you have never owned a vacuum tube amplifier you will be thrilled by the silky-smooth sound and incredible detail that only a tube amplifier can provide. And with your Rogue Audio amplifier, you can be sure that you are getting the very best in tube amplification. We at Rogue Audio are extremely proud of our products and want you to enjoy them to their fullest potential. So please, take the time to read through this short manual so that you can be confident that you have set up your amplifier properly.

SETTING UP YOUR POWER AMPLIFIER

tools required: phillips head screwdriver and a clean glove or cloth.

WARNING - This amplifier uses voltages that could cause injury or death. Never open the amplifier while it is plugged in, and always wait at least one hour after turning the unit off to unplug and open the unit. *Lethal* voltages can remain in the electronics after the unit is unplugged.

- 1) *Opening the box* - Carefully remove the amplifier from the box. It is important that you retain the packing material and box in the event that the amplifier ever needs servicing. The packing material and box have been carefully designed to protect your valuable equipment during shipping so you don't want to throw them away!

- 2) *Remove Shipping Pallet* - The amplifier is shipped attached to a shipping pallet. This pallet serves two purposes. First, and foremost it acts to tie down the mechanically isolated transformer platform. Secondly, it provides strength to the main chassis. Both of these items are critical to ensure that no damage occurs in transit. After removing the amplifier from the box and packing material, CAREFULLY turn the unit upon its side. Remove the 4 thumbscrews and washers. Retain these screws and pallet in the event that the unit ever needs servicing. See Figure 1.

WARNING : Shipping this unit without correctly attaching the shipping pallet can result in serious structural damage to the unit.

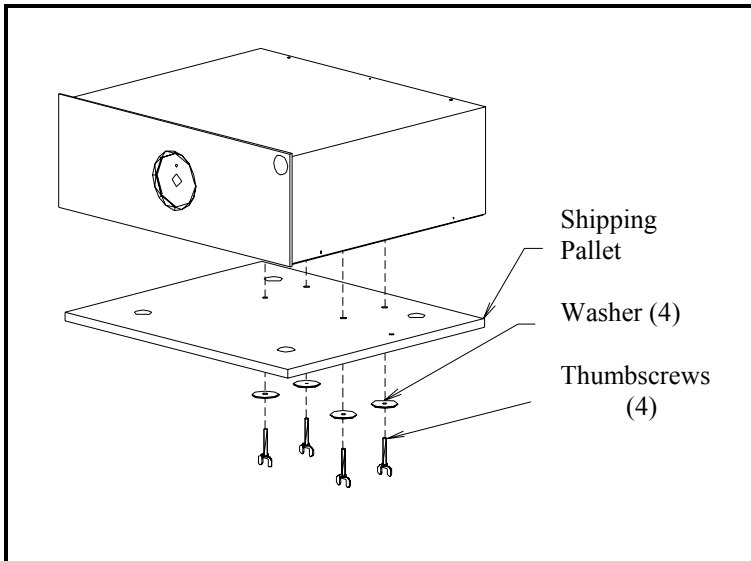


Figure 1

- 3) *Remove the Top Cover* - Using a phillips head screwdriver, remove the top cover of the amplifier chassis. See Figure 2.

WARNING - If the unit has been powered up, you *must* turn off the power at the switch and wait at least one hour before disconnecting the electrical cord. After doing so, the unit may be unplugged and the top cover removed. This time is required for dangerous voltages to dissipate.

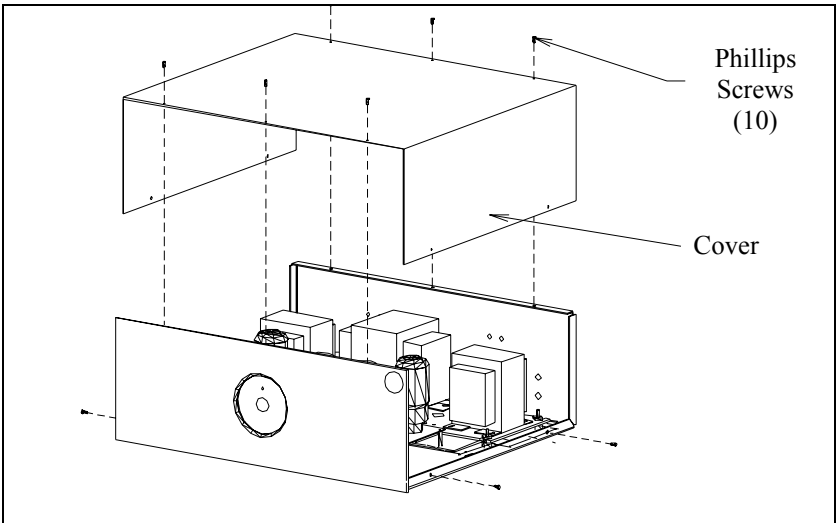


Figure 2

- 4) *Install Power Tubes* - To avoid damage in transit, the power tubes are shipped in a protective container inside the main shipping container. Carefully unpack the tubes, and using a glove or a clean dry cloth, install the tubes as shown in figure 3.

- 5) *Inspect Input and Driver Tubes* - Inspect the remaining tubes to ensure that they are fully seated in their ceramic sockets. If a tube appears to be tilted or otherwise dislocated, using a glove or clean cloth, press down gently on the tube to reseal it in its socket. See Figure 3 for tube locations.

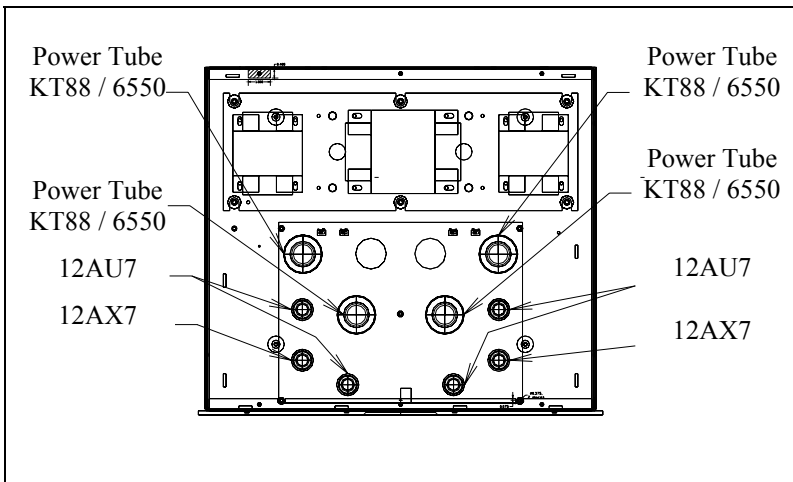


Figure 3

Note that amps may be shipped with a different but equivalent tube type

- 6) *Select Mode* - The Rogue 88 features a user selectable option of running in either Triode or Ultra-Linear modes. Some listeners prefer pure triode operation, however, it does limit the power output of the amplifier to approximately 40 watts per channel. Ultra-Linear operation offers the amplifier's full rated output power of 60 watts per channel. The user is encouraged to try both modes and determine their own preference.

WARNING - If the unit has been powered up, you *must* turn off the power at the switch and wait at least one hour before disconnecting the electrical cord. After doing so, the unit may be unplugged and the top cover removed. This time is required for dangerous voltages to dissipate.

To switch modes, use a nonconductive screwdriver to flip the 4 switches shown in Figure 4 to the chosen settings. The unit is shipped from the factory in Ultra-Linear mode.

Caution - Always ensure that all switches are set alike, in either UL or Triode Mode

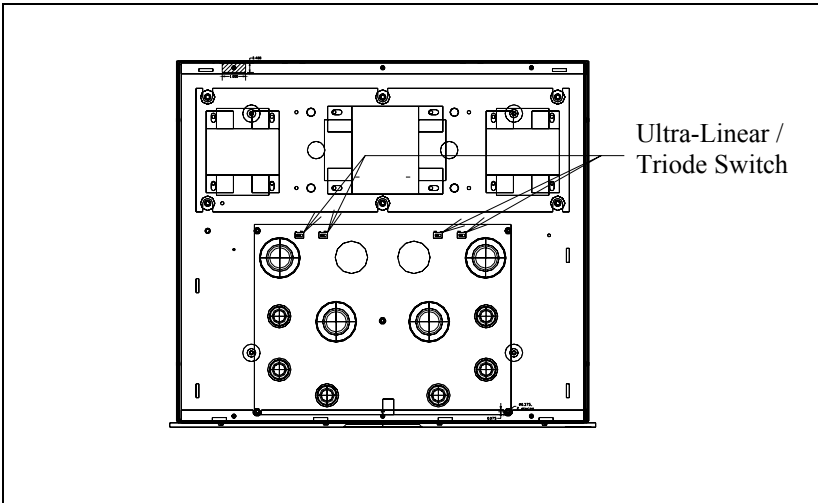


Figure 4

7) *Matching Speaker Impedance* - The Rogue 88 provides options for either 4 ohm or 8 ohm speakers. The impedance selected will depend on the speakers used. Consult either the owner's manual for your speaker or your local dealer for the correct choice. To switch impedance setting, refer to figures 5 and 6. Note - the amplifier is factory set for 8-ohm speakers.

⇒ Using a 5/16" wrench, remove the outermost nut from the red binding post.

⇒ Remove the wire and lug marked 8 ohm from the binding post. Leave the wire and lug marked feedback in place.

Warning-Never remove the lugs marked feedback or ground from the binding posts. Doing so could cause permanent damage to the unit

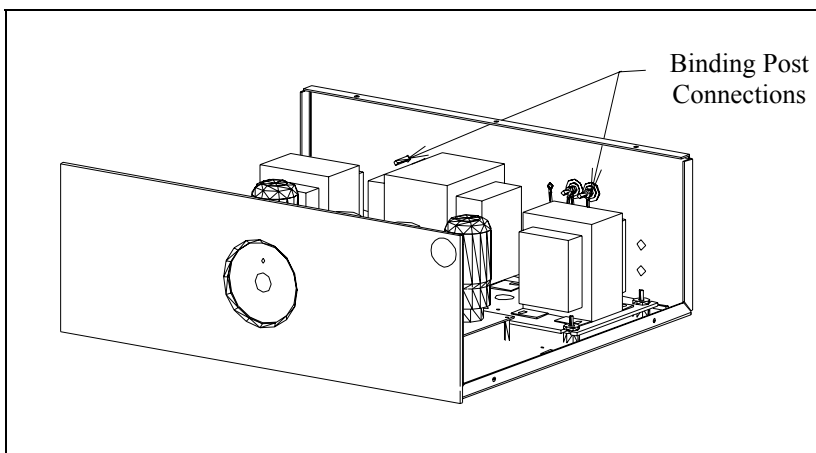


Figure 5

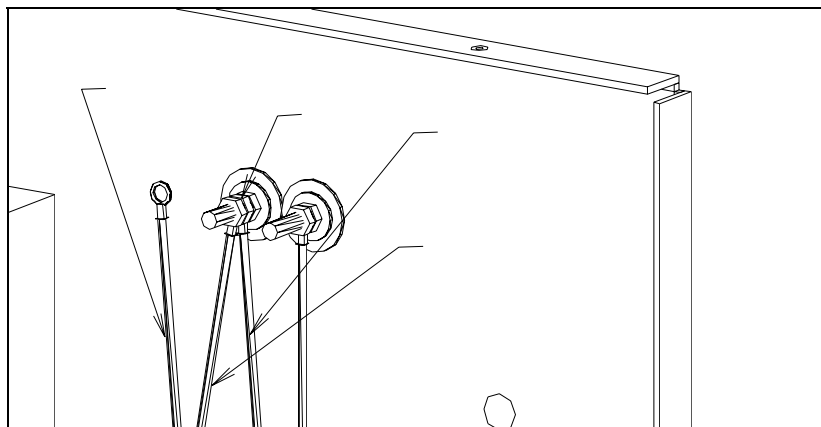


Figure 6

- ⇒ Remove the polyurethane tubing from the unused 4-ohm wire and lug.
 - ⇒ Place 4-ohm wire and lug onto red binding post.
 - ⇒ Place polyurethane tubing on the 8-ohm wire and lug.
 - ⇒ Replace nut onto binding post and tighten with wrench.
- 8) *Attach Power Cord* - Connect the IEC end of detachable power cord to the amplifier, and plug opposite end into corresponding outlet.
- 9) *Connections to other components* -. The input connections from the preamplifier are made via RCA jacks on the rear of the amplifier. Be sure to use high quality interconnect cables - they do make a difference.

- 10) Polarity - The Rogue 88 amplifier is a non-inverting amplifier (positive signal in gives positive signal out) so, for best sound, care should be taken to ensure correct polarity at the speaker terminals. If your preamplifier is also non-inverting, then connect the positive (+) outputs of your power amplifier to the positive (+) terminals of the loudspeakers and the negative (-) outputs to the (-) negative loudspeaker terminals. If your preamplifier is inverting, then connect the positive outputs (+) of you power amplifier to the negative (-) loudspeaker terminals, and the negative outputs (-) to the positive (+) loudspeaker terminals. If you are unsure whether your preamplifier is inverting, check the owners manual or contact the manufacturer. If all else fails, try both connections and listen to which sounds better (do this using several different recordings as not all recordings are made with correct phase).
- 11) Amplifier Location - The Rogue 88 amplifier is an enclosed tube design with forced air ventilation and cooling. This cooling has been designed and tested to ensure long term reliability and safety of the unit. The amplifier should be placed in such a way that this airflow is not impeded. See Figure 7.

WARNING - All vent locations should have 6 to 8 inches of free space to allow for adequate cooling. Failure to ensure this could degrade unit reliability.

WARNING - This unit should not be placed in an enclosed shelf where hot air from the exit vent is recycled back into the intake vent.

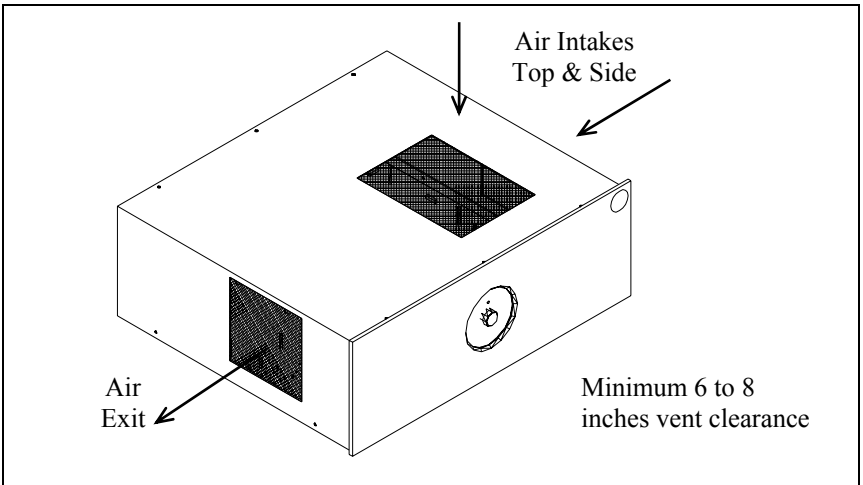


Figure 7

OPERATING YOUR AMPLIFIER

- 1) *Powering up the system* - First turn on the amplifier by pushing in the “power” button. The red LED will light after several seconds after which the unit is ready for use. Always turn on the preamplifier in the system before the power amplifier and source materials, and always turn off the power amplifier first
- 2) *Breaking in the amplifier* - As with many high-quality audio amplifiers, the sound of the Rogue Eighty-Eight amplifier will improve during the first few hours of use. This time is required for components to “burn in.” No special techniques are required other than standard operation.

Note: This unit will not sound its best until the tubes have warmed up. This will take approximately 5-10 minutes

MAINTENANCE

The Rogue Eighty-Eight has been designed to provide many years of enjoyable and reliable service. The greatest care has been taken to select vacuum tubes that provide superior sound and ensure long life. However, at some point in time, the tubes will wear out. The factory-installed tubes should last thousands of hours. Should it become necessary to replace a tube, follow the instructions listed below.

Replace Tubes by :

- 1) Turn off power at switch.
- 2) Wait one hour for dangerous voltages to dissipate.
- 3) Unplug power cord from wall socket.
- 4) Remove the top cover. See figure 2.
- 5) Using a glove or clean dry cloth, carefully remove the tubes from their sockets - **DO NOT TOUCH ANY OTHER ELECTRICAL COMPONENTS.**
- 6) Obtain and insert a new set of tubes. It is recommended that a new set of tubes be obtained from Rogue. If tubes are obtained from another source, follow the diagram in figure 3 for tube type.
- 7) Insert new tubes in sockets using a glove or cloth. See figure 3 for locations.

No other items in the unit are designed to be user serviceable.

WARNING - This amplifier uses voltages that could cause injury or death. Never open the amplifier while it is plugged in, and always wait at least one hour after turning the unit off to unplug and open the unit. *Lethal* voltages can remain in the electronics after the unit is unplugged.

IF THERE IS A PROBLEM

Below is a checklist of possible solutions if any problems are encountered.

IF THERE IS NO SOUND

- 1) Check that all input and output signal connections are secure.
- 2) Ensure that all tubes are properly seated in sockets.
- 3) Ensure that power cord is seated securely.

IF SOUND DISTORTIONS ARE PRESENT

- 1) It is possible that a tube has gone bad. Return the unit to the dealer to the dealer to test the tubes.

If these do not clear the problem, please call Rogue Audio Technical Support on 570-992-9901.

OWNER AND WARRANTY REGISTRATION FORM

Included with this manual is an Owner and Warranty Registration Form. Please take a minute to fill out this card and return it Rogue Audio.

SPECIFICATIONS

output power	60 WPC
frequency response	5Hz - 50 kHz
THD	< 0.1% typical < 1% at rated power
input sensitivity	1.0 V RMS
dimensions	18 ¼" W x 15 ¾" D x 7" H
weight	55 Lbs
power requirements	115/230V - 50/60Hz

LIMITED WARRANTY

Warranty Period

This product has been manufactured under the highest standards of quality and workmanship. Rogue Audio Inc. (hereinafter “Rogue Audio”) warrants this product against defects in material or workmanship as follows:

With the exception of vacuum tubes, Rogue Audio warrants to the consumer all parts of this product against defects in material and workmanship for a period of three years from the date of retail purchase. Rogue Audio warrants the vacuum tubes for a period of six months from the date of retail purchase. Any defective parts will be replaced free of charge, excluding shipping and handling.

Proof of purchase in the form of a bill of sale or recited invoice, which indicates that the product is within the warranty period, must be presented to obtain warranty service. Rogue Audio suggests that the purchaser retain the dealers bill of sale as evidence of the date of retail purchase.

What’s Not Covered

This warranty does not cover cosmetic damage or any damage that results from product misuse, product abuse, installation error, connection to an improper voltage supply, accident, improper maintenance, alterations, modifications not authorized in writing by Rogue Audio, lightning, power surges, or acts of God. Use of any other than Rogue Audio factory parts may void this warranty.

This warranty does not cover the cost of parts and labor, which would be otherwise provided without charge under this warranty, obtained from any source other than Rogue Audio.

This warranty applies only to consumer use of this product and does not cover any product that is used in any trade or business, or in an industrial or commercial application.

This warranty is valid only in the United States.

YOUR RIGHTS

ROGUE AUDIO LIMITS ITS OBLIGATIONS UNDER ANY IMPLIED WARRANTIES UNDER STATE LAWS TO A PERIOD NOT TO EXCEED THE WARRANTY PERIOD. SOME STATES DO NOT ALLOW LIMITATIONS ON HOW LONG AN IMPLIED WARRANTY LASTS, AND SOME STATES DO NOT ALLOW THE EXCLUSION OR LIMITATION OF INCIDENTAL OR CONSEQUENTIAL DAMAGES, SO THE ABOVE LIMITATIONS OR EXCLUSIONS MAY NOT APPLY TO YOU. THIS WARRANTY GIVES YOU SPECIFIC LEGAL RIGHTS, AND YOU MAY HAVE OTHER RIGHTS, WHICH MAY VARY FROM STATE TO STATE.

To Obtain Service

To obtain service, you must contact Rogue Audio and obtain a return authorization number. The product must be delivered to Rogue Audio in its original packaging prepaid at the following address:

**Rogue Audio Inc.
3 Marian Lane
Brodheads ville, PA 18322**

THE ROGUE AUDIO MISSION

At Rogue Audio we design and manufacture vacuum tube amplifiers. There is fierce competition in this market and we will only survive by delivering a superior product and superior service - we have the engineering and managerial talent to do so. Our core competencies are electrical, mechanical and production engineering, along with an overarching passion for excellence. These skills will be used to create products that offer outstanding value in the high-end marketplace.

Rogue Audio amplifiers will always be engineered to provide the four key elements of audio value:

- *superior sonics*
- *high quality and reliability*
- *an outstanding appearance*
- *an affordable price*

Our philosophy is simple - We will never design any amplifier that we would not purchase for ourselves.

**Rogue Audio Inc.
3 Marian Lane
Brodheadsville, PA 18322**